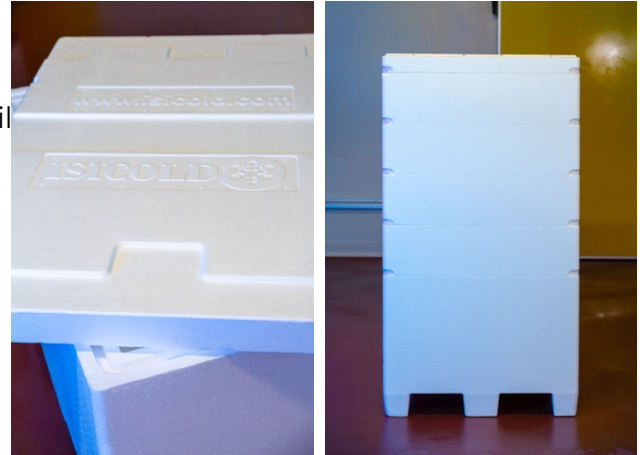




ISICOLD MODULAR BOX

Positive aspect of the product:

- Very high performance with ISICOLD negative gelpacks
- Ideal for the negative cold -18/-20
- Secures the premium quality goods
- Avoids energy transmission when immobilized
- Supports 500kg
- Heat transfer coefficient (K): 0.38
- Delivered covered



Description of the product:

- Lightweight, mono material solution
- 100% recyclable
- Reusable PS-PE Copolymer
- White expanded polystyrene -25kg/m³

DESIGNATION	MODULAR BOX	RING 150L
Ext.dim (mm)	1200x800x690	1200x800x215
Int.dim Int. (mm)	1060x660x430	1060x660x215
Thickness wall (mm)	70	70
Working olume (L)	300	150
Empty weight (Kg)	7,1	1,4
Conditionnement	1 piece/cover	3 pieces/cover

Box + 3 rings :

Ext. dim (mm) : 1200x800x1340

Int. dim (mm) : 1060x660x1075

Poids : 11,3 kilos

Box + 4 rings :

Ext. dim (mm) : 1200x800x1550

Int. Dim (mm) : 1060x660x1290

12,7 kilos

With 3 rings, the height of the box is 1m56, perfectly suitable for the Airfreight Industry...

